



Shown: Amelia Bay, Elevation A1



Amelia Bay

Harbour Series Collection

The Amelia Bay offers that beautiful coastal home with a great open floor plan. A spacious kitchen with wrap-around counter and entertaining island opens up to a vaulted great room and vaulted dining room. Expansive doors lead out to a large screened loggia with adjacent patio to enjoy the coastal weather. A private master suite features his and hers walk-in closets, his and hers vanities, and a large spa-like walk-in shower. Two guest bedrooms and a second floor optional flex room with bath allows for plenty of space and storage.



Standard Elevation A1



Optional Elevation B2



Optional Elevation C3



Optional Elevation D4



Optional Elevation E5



KENT homes

A SMARTER WAY TO A LUXURY HOME

1721 Allens Lane, Suite 202, Wilmington, NC 28403 toll free (877) 256 5313 p (910) 256 5313 www.kenthomes.net

©2020 Kent Homes


Amelia Bay
 Harbour Series Collection



Standard Elevation A1



Optional Elevation B2



Optional Elevation C3



Optional Elevation D4



Optional Elevation E5

KENT *homes*
 A SMARTER WAY TO A LUXURY HOME

square footage

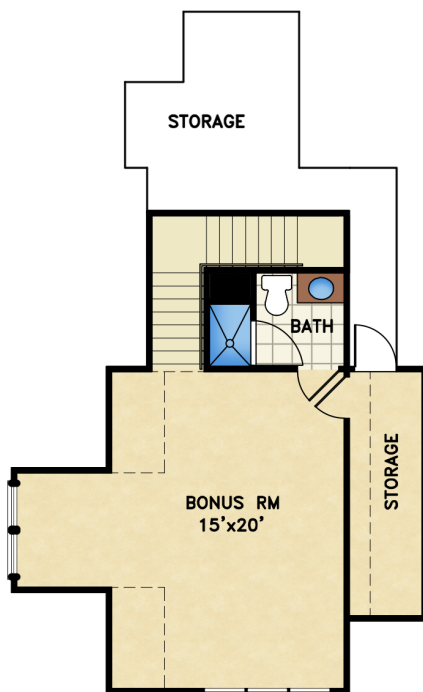
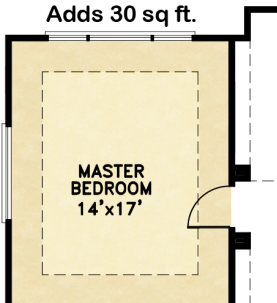
total heated: 1,840 sq. ft.
 total heated with bonus room & bath: 2,426 sq. ft.
 garage: 544 sq. ft.
 covered outdoor living: 357 sq. ft.

overall dimensions

50' width x 65' depth

**OPTIONAL ENLARGED
 MASTER BEDROOM**

Adds 30 sq. ft.



OPT BONUS & BATH
 586 sq. ft.



All renderings are the artist's impression of the home. The drawings and square-footage notations are approximate and are only to be used for reference. They should not be relied upon as representations, expressed or implied, of the final detail of the residence.