



Shown: Bar Harbour I, Elevation F6



## Bar Harbour I

Coastal Traditional Collection

The Bar Harbour I has an open layout, perfect for entertaining! The great room opens to both the kitchen and dining areas, as well as the covered loggia. The master retreat occupies one side of the home for optimum privacy, with convenient access to the laundry. The Bar Harbour I also includes a study, adjacent to the great room while overlooking the front porch.



Standard Elevation A1



Optional Elevation B2



Optional Elevation C3



Optional Elevation D4



Optional Elevation E5



Optional Elevation F6



Optional Elevation G7



Optional Devonshire Elevation A1



Optional Devonshire Elevation B2



Optional Devonshire Elevation C3



Optional Devonshire Elevation D4



# KENT homes

A SMARTER WAY TO A LUXURY HOME

1721 Allens Lane, Suite 202, Wilmington, NC 28403 toll free (877) 256 5313 p (910) 256 5313 [www.kenthomes.net](http://www.kenthomes.net)

©2020 Kent Homes





# Bar Harbour I

## Coastal Traditional Collection

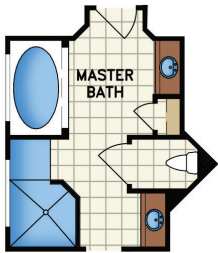


### square footage

total heated: 2,705 sq. ft.  
 total heated with bonus room & bath: 3,205 sq. ft.  
 garage: 605 sq. ft.  
 covered outdoor living: 373 sq. ft.

### overall dimensions

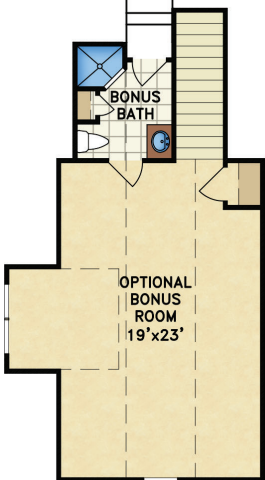
60' width x 82' depth



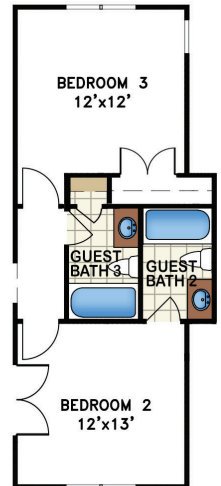
OPTIONAL MASTER BATH



STORAGE



OPTIONAL BONUS and BATH  
500 sq. ft



OPTIONAL DOUBLE GUEST BATH  
(Adds 21 Sq Ft)



All renderings are the artist's impression of the home. The drawings and square-footage notations are approximate and are only to be used for reference. They should not be relied upon as representations, expressed or implied, of the final detail of the residence.



# Bar Harbour I

## Coastal Traditional Collection



### square footage w/ optional angled garage

total heated: 2,705 sq. ft.  
 total heated with bonus room & bath: 3,205 sq. ft.  
 garage: 605 sq. ft.  
 covered outdoor living: 373 sq. ft.

### overall dimensions

65' width x 86' depth



All renderings are the artist's impression of the home. The drawings and square-footage notations are approximate and are only to be used for reference. They should not be relied upon as representations, expressed or implied, of the final detail of the residence.