



Shown: Grand Amelia, Elevation A1



Grand Amelia

Harbour Series Collection

The Grand Amelia offers that beautiful coastal home with a great open floor plan. A spacious kitchen with lots of counter space and entertaining island opens up to a vaulted great room with dormer and vaulted dining room. Expansive doors lead out to a large screened loggia with adjacent patio to enjoy the coastal weather. A private master suite features a tray ceiling, his and hers walk-in closets, his and hers vanities, and a large spa-like walk-in shower. Two guest bedrooms and a second floor optional bonus room with bath allows for plenty of space and storage.



Standard Elevation A1



Optional Elevation B2



Optional Elevation C3



Optional Elevation D4



Optional Elevation E5

KENT *homes*

A SMARTER WAY TO A LUXURY HOME





Grand Amelia

Harbour Series Collection



Standard Elevation A1



Optional Elevation B2



Optional Elevation C3



Optional Elevation D4



Optional Elevation E5

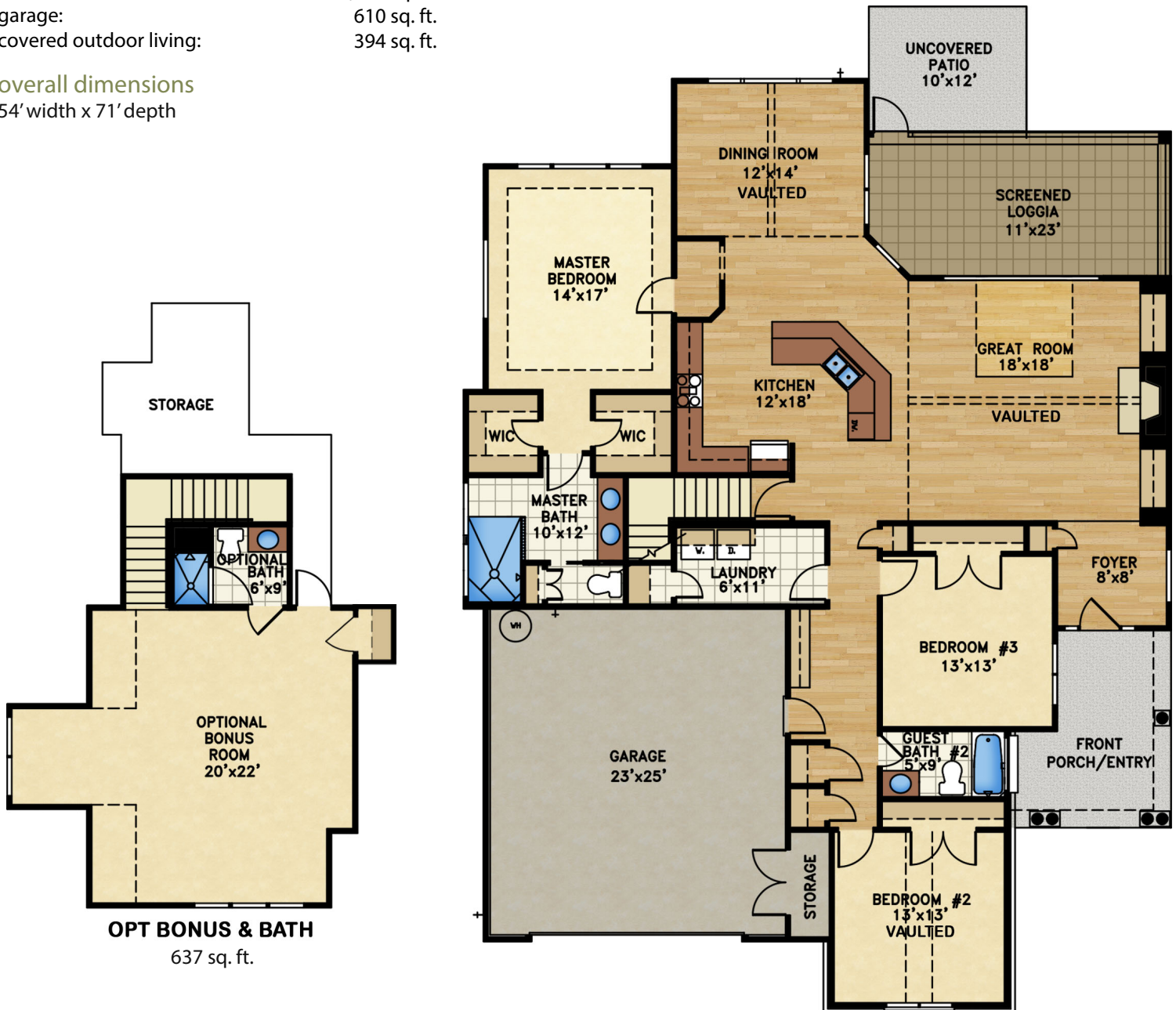
KENT *homes*
A SMARTER WAY TO A LUXURY HOME

square footage

total heated: 2,222 sq. ft.
total heated with bonus room & bath: 2,859 sq. ft.
garage: 610 sq. ft.
covered outdoor living: 394 sq. ft.

overall dimensions

54' width x 71' depth



OPT BONUS & BATH
637 sq. ft.



All renderings are the artist's impression of the home. The drawings and square-footage notations are approximate and are only to be used for reference. They should not be relied upon as representations, expressed or implied, of the final detail of the residence.