



Shown: Hamilton Bay, Elevation A1



Hamilton Bay

Harbour Series Collection

The Hamilton Bay offers that beautiful coastal home with a great open floor plan. A spacious kitchen with entertaining island opens up to a great room and dining room with tray ceilings. Expansive doors lead out to a large screened loggia with adjacent patio to enjoy the coastal weather. A private master suite features his and hers walk-in closets, his and hers vanities, and a large spa-like walk-in shower. Three guest bedrooms and a second floor optional flex room allows for plenty of space and storage.



Standard Elevation A1



Optional Elevation B2



Optional Elevation C3



Optional Elevation D4



Optional Elevation E5

KENT *homes*

A SMARTER WAY TO A LUXURY HOME



1721 Allens Lane, Suite 202, Wilmington, NC 28403 toll free (877) 256 5313 p (910) 256 5313 www.kenthomes.net

©2020 Kent Homes



Hamilton Bay

Harbour Series Collection

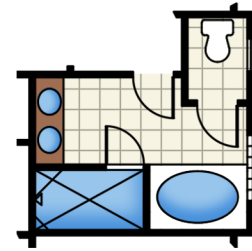
KENT *homes*
A SMARTER WAY TO A LUXURY HOME

square footage

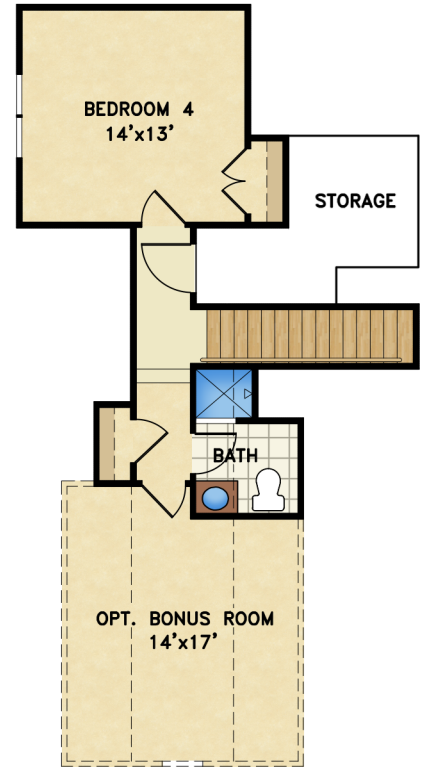
total heated: 2,441 sq. ft.
total heated with bonus room: 2,682 sq. ft.
garage: 565 sq. ft.
covered outdoor living: 398 sq. ft.

overall dimensions

55' width x 70' depth



OPTIONAL MASTER BATH



OPTIONAL BONUS ROOM
241 sq. ft.



All renderings are the artist's impression of the home. The drawings and square-footage notations are approximate and are only to be used for reference. They should not be relied upon as representations, expressed or implied, of the final detail of the residence.