



Shown: Jonesport, Elevation B2



Jonesport

Coastal Traditional Collection

The Jonesport, cousin to the Bar Harbour, maintains the same great layout and features, just on a slightly smaller scale. With an open floor plan, the kitchen and large entertaining island opens to the great room and dining area with tray ceilings. The great room overlooks a spacious screened loggia with attached patio. A large private study at the front is the perfect quiet escape. The master has convenient access to the laundry and the split floor plan provides optimum privacy with the guest rooms on the other side of the home. The master suite features his and hers closets, a tray ceiling, and a master bath with a walk-in shower and his and hers vanities. A bonus room with bath is optional.



Standard Elevation A1



Optional Elevation B2



Optional Elevation C3



Optional Elevation D4



Optional Elevation E5



Optional Elevation F6



Optional Elevation G7



Optional Elevation H8



Optional Elevation I9



Optional Elevation J10



KENT *homes*

A SMARTER WAY TO A LUXURY HOME

1721 Allens Lane, Suite 202, Wilmington, NC 28403 toll free (877) 256 5313 p (910) 256 5313 www.kenthomes.net

©2020 Kent Homes



Jonesport

Coastal Traditional Collection

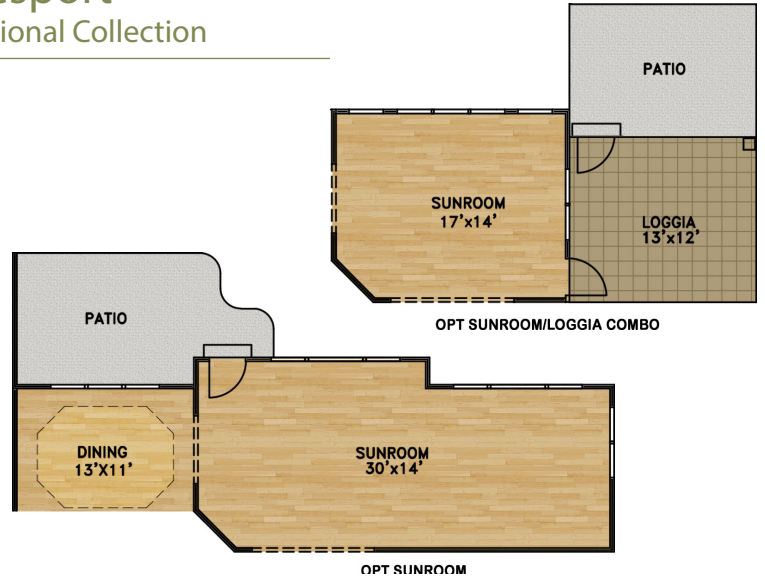
KENT homes
A SMARTER WAY TO A LUXURY HOME

square footage

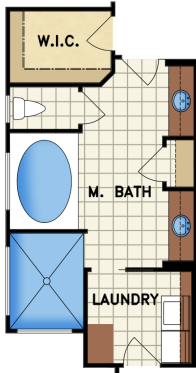
total heated: 2,350 sq. ft.
 total heated with bonus room & bath: 2,787 sq. ft.
 total heated with bonus room, bath, 4th br: 2,953 sq. ft.
 garage: 623 sq. ft.
 covered outdoor living: 534 sq. ft.

overall dimensions

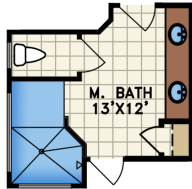
60' width x 83' depth



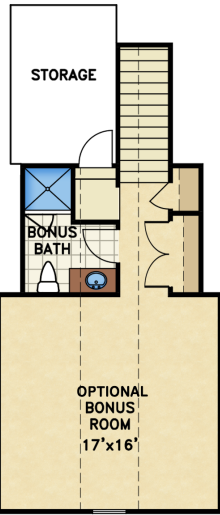
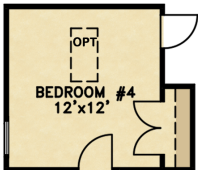
ALTERNATE MASTER BATH



RELOCATE MASTER LINEN CLOSET



This option not available for Elevation J10



OPTIONAL BONUS ROOM & BATH & 4TH BEDROOM
603 sq. ft.

OPTIONAL BONUS ROOM & BATH
437 sq. ft.



All renderings are the artist's impression of the home. The drawings and square-footage notations are approximate and are only to be used for reference. They should not be relied upon as representations, expressed or implied, of the final detail of the residence.



Jonesport

Coastal Traditional Collection

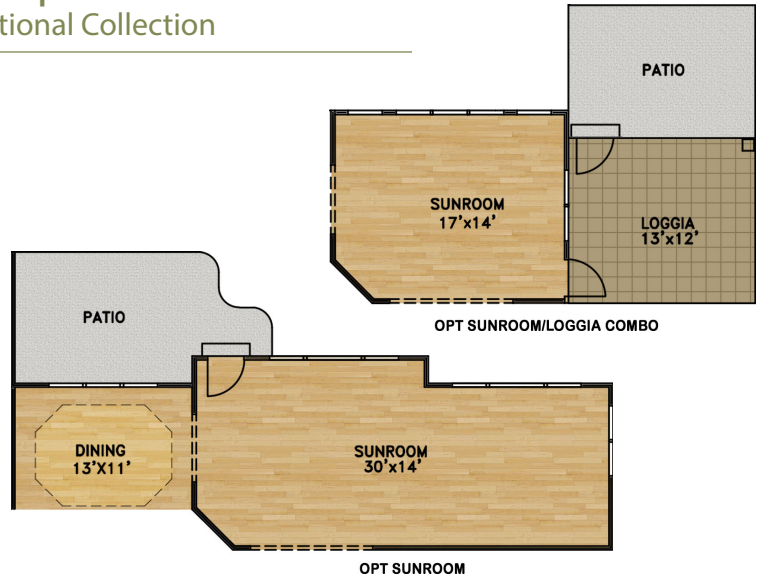
KENT *homes*
A SMARTER WAY TO A LUXURY HOME

square footage w/ optional angled garage

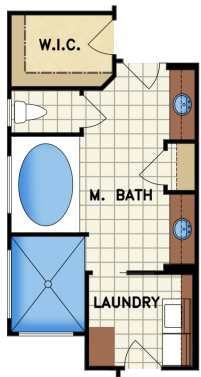
total heated: 2,350 sq. ft.
total heated with bonus room & bath: 2,784 sq. ft.
garage: 608 sq. ft.
covered outdoor living: 534 sq. ft.

overall dimensions

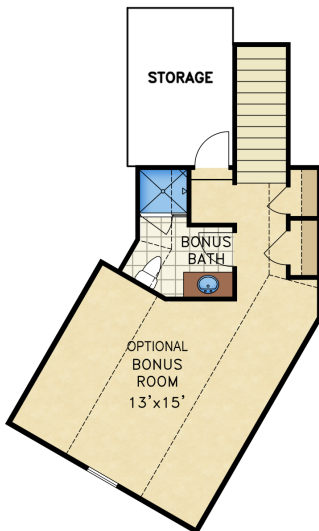
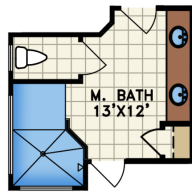
62' width x 84' depth



ALTERNATE MASTER BATH



RELOCATE MASTER LINEN CLOSET



OPTIONAL BONUS ROOM & BATH
434 sq. ft.



OPTIONAL ANGLED GARAGE



All renderings are the artist's impression of the home. The drawings and square-footage notations are approximate and are only to be used for reference. They should not be relied upon as representations, expressed or implied, of the final detail of the residence.

©2020 Kent Homes