



Shown: Pierre's Bay, Elevation A1



## Pierre's Bay

### Harbour Series Collection

The Pierre's Bay offers a beautiful coastal home with a great open floor plan. A spacious kitchen with walk-in pantry, wrap-around counter and large entertaining island opens up to a great room and dining area with a tray ceiling. Expansive doors lead out to a screened loggia with adjacent patio to enjoy the coastal weather. A private master suite is located at the back of the home and features his and hers walk-in closets, his and hers vanities, and a large spa-like walk-in shower. A pocket office, two guest bedrooms, a second floor optional bonus room and bath, and optional flex space allow for plenty of space and storage.



Elevation A1



Optional Elevation B2



Optional Elevation C3



Optional Elevation D4



Optional Elevation E5



Optional Elevation F6

# KENT *homes*

A SMARTER WAY TO A LUXURY HOME



1721 Allens Lane, Suite 202, Wilmington, NC 28403 toll free (877) 256 5313 p (910) 256 5313 [www.kenthomes.net](http://www.kenthomes.net)

©2020 Kent Homes



# Pierre's Bay

## Harbour Series Collection

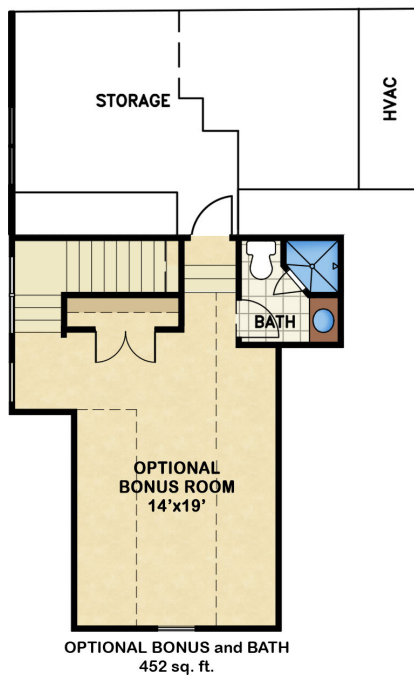
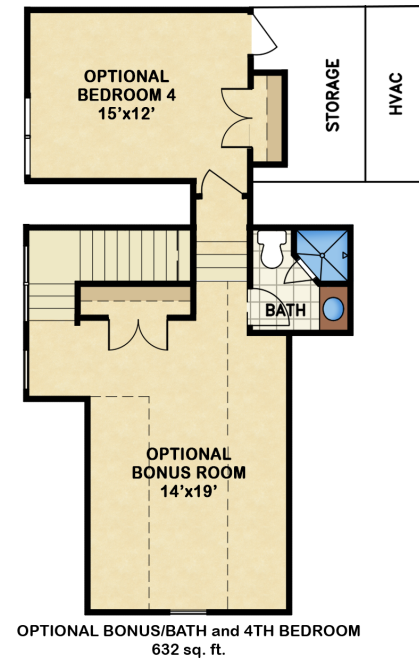


### square footage

total heated: 1,980 sq. ft.  
 total heated with bonus room & bath: 2,432 sq. ft.  
 garage: 525 sq. ft.  
 covered outdoor living: 199 sq. ft.

### overall dimensions

55' width x 66' depth



All renderings are the artist's impression of the home. The drawings and square-footage notations are approximate and are only to be used for reference. They should not be relied upon as representations, expressed or implied, of the final detail of the residence.