



Shown: Siesta Bay, Elevation A1



Siesta Bay

Harbour Series Collection

The Siesta Bay offers that beautiful coastal home with a great open floor plan. A spacious kitchen with entertaining island opens up to a vaulted great room and dining room with a tray ceiling. Expansive doors lead out to a large screened loggia with adjacent patio to enjoy the coastal weather. A private master suite features a large walk-in closet, his and hers vanities, and a large spa-like walk-in shower. A study, two guest bedrooms, and a second floor optional flex room and bath allows for plenty of space and storage.



Standard Elevation A1



Optional Elevation B2



Optional Elevation C3



Optional Elevation D4



Optional Elevation E5



KENT homes

A SMARTER WAY TO A LUXURY HOME

1721 Allens Lane, Suite 202, Wilmington, NC 28403 toll free (877) 256 5313 p (910) 256 5313 www.kenthomes.net

©2020 Kent Homes



Siesta Bay

Harbour Series Collection

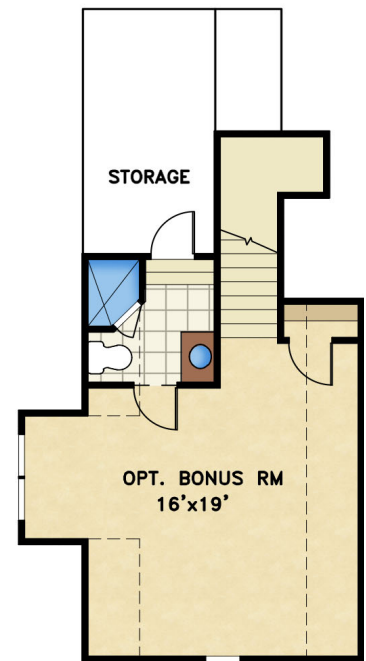
KENT *homes*
A SMARTER WAY TO A LUXURY HOME

square footage

total heated: 1,974 sq. ft.
total heated with bonus room & bath: 2,420 sq. ft.
garage: 525 sq. ft.
covered outdoor living: 491 sq. ft.

overall dimensions

53' width x 71' depth



BONUS and BATH
446 sq. ft.



All renderings are the artist's impression of the home. The drawings and square-footage notations are approximate and are only to be used for reference. They should not be relied upon as representations, expressed or implied, of the final detail of the residence.